

PW WIEGAND-NK Proximity Reader

1. Introduction

The PW Wiegand-NK is a slim Wiegand Output Proximity Reader, compatible with 125KHz EM format card.

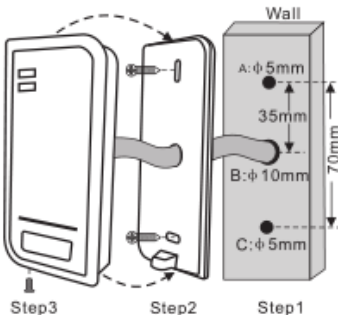
The reader is fully potted, and can function at extreme temperatures (-40°C ~60°C), which allows it is capable to be mounted either indoor or outdoor.

2. Specifications

Operation Voltage	9~24V DC
Standby Current	≤25mA
Frequency	125KHz
Card Type	EM card
Read Range	Up to 2.8 inches (7cm)
Output Format	AAP Custom 40-bit
Operating Temperature	-40°C~60°C
Operating Humidity	10% to 95% RH
Color	Black
Index of Protection	IP66
Dimension(H x W x T)	103 x 48 x 20mm
Net Weight	100g
Shipment Weight	150g

3. Installation

- Drill 2 holes (A, C) on the wall for the screws and one hole for the cable
- Knock the rubber bungs to the holes (A, C)
- Fix the back cover on the wall with 2 screws
- Thread the cable though the cable hole (B)
- Attach the unit to the back cover



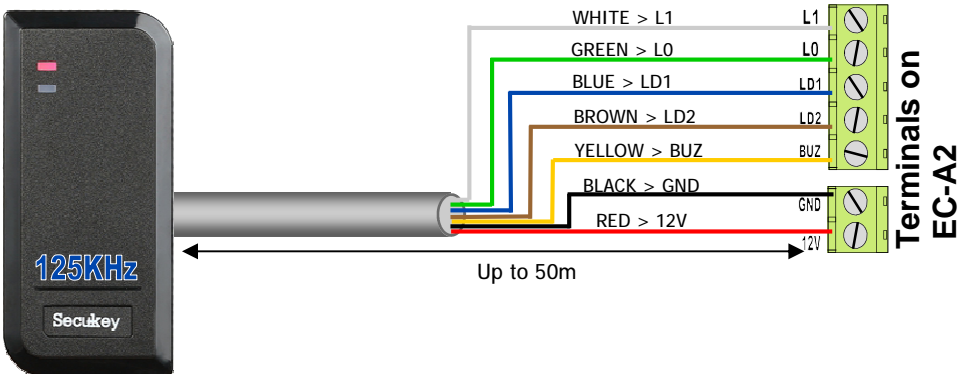
ARROWHEAD ALARM PRODUCTS Ltd.

1A Emirali Road,
Silverdale 0932,
Auckland, NZ
Ph. 09 414 0085
www.aap.co.nz
v1.1


Arrowhead
Alarm Products

4. Wiring

Color	Function	Notes
Red	Power	+DC (9-24V DC)
Black	GND	Ground
Green	D0	Data 0
White	D1	Data 1
Blue	LED1	Red LED Light Control
Brown	LED2	Green LED Light Control
Yellow	Buzzer	Buzzer Control



5. Function Table sheet

Read Card	The LED light will be turn into Green, and the buzzer sounds a beep, at the meantime, the reader outputs the Wiegand signal
External LED Control	When the input voltage for LED is low, the LED will turn into Green or Red
External Buzzer Control	When the input voltage for Buzzer is low, the Buzzer will sound
Wiegand Data Output	This device has locked down software to allow it to communicate with the EC-A2